

POLYFLOR

POLYSAFE STANDARD

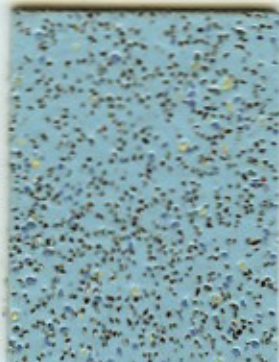
Heavy-duty safety flooring



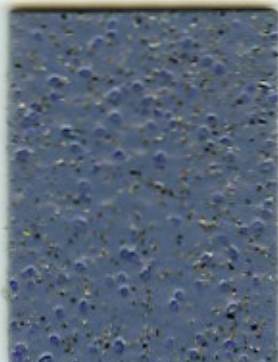
Elmwood 4520 w/r 9610



Ash Grey 4540 w/r 2090



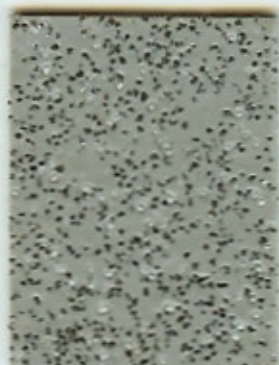
Cool Aqua 4570 w/r 4570



Storm Blue 4560 w/r 4910



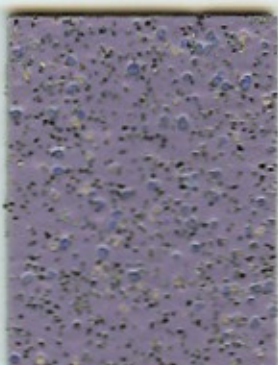
Autumn Beige 4140 w/r 9610



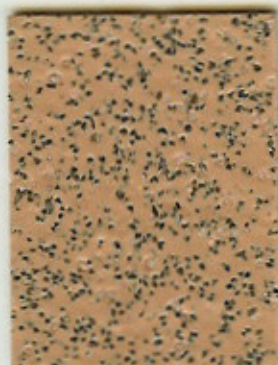
Silver Birch 4020 w/r 9200



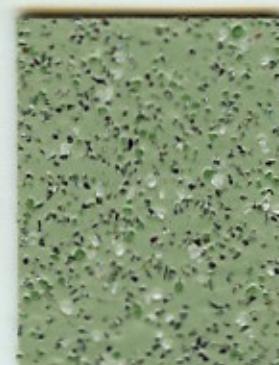
Cedar Blue 4060 w/r 9040



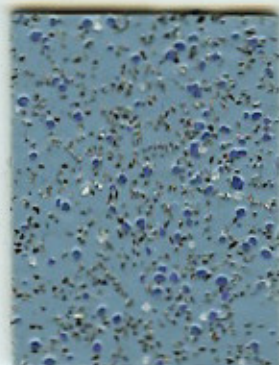
Lilac Blue 4580 w/r 4580



Maple Fawn 4030 w/r 4030



Alpine Green 4110 w/r 4110



Arctic Blue 4130 w/r 4130



Nordic Grey 4090 w/r 8680



Antique Copper 4120 w/r 4120



Redwood 4040 w/r 9230



Twilight 4490 w/r 4490



Black Walnut 4150 w/r 8640

For continually wet areas please refer to our Polysafe Hydro range.


POLYFLOR
COVERING THE WORLD

SPECIFICATION

規格・СПЕЦИФИКАЦИЯ・ESPECIFICACIÓN


 2.0mm
2.5mm

 2.0mm: 2m x 20m = 40m²
2.5mm: 2m x 20m = 40m²

 2.0mm: 2430g/m²
2.5mm: 3100g/m²

GENERAL PERFORMANCE

 EN 13845
EN 649
ASTM F1303
AS2055.1


Agrément - G5ws


REACTION TO FIRE

 EN 13501-1 Class Bfl-s1
EN ISO 9239-1 >8kw/m²
EN ISO 11925-2 Pass
ASTM E648 Class 1

ENHANCED SLIP

 Sustainable wet slip resistance* AS/NZS 4586 R10
EN 13845 ESf AS/NZS 3661.1:0.4
RRL Pendulum Test >36 (wet test - 4S Rubber)
Surface roughness Rtm >20µm
The slip resistance across all Polysafe products is assured throughout the guaranteed life of the product.

ABRASION RESISTANCE

 EN 13845 50,000 cycles
EN 649 Group T

VOC EMISSIONS

 AgBB VOC test : Pass
(Low Result)

RESISTANCE TO CHEMICALS

Polysafe Standard has good resistance to dilute acids and alkalis. The Polyflor Technical Information Manual provides a general guide. Chemical resistance charts by shade are available on request.


HYGIENE

Contains antimicrobial agents for improved hygiene protection. This product has been independently tested and results demonstrate that it inhibits the growth of MRSA. An effective cleaning regime is however, the most important defence against infection.


ELECTRICAL BEHAVIOUR (body voltage)

EN 1815 This product does not accumulate static charges above 2kV and is classified as 'antistatic'. For specialist applications where there is a requirement to dissipate the electrostatic charge, see the Polyflor ESD product ranges.


APPLICATIONS

Polysafe Standard is ideal for use in areas which are normally dry but where occasional water spillage can occur, making slip resistance an important consideration. Typical areas include clinics, laundry and sluice rooms, nursing homes, washrooms, bars, food preparation areas, kitchens, canteens and institutional applications. For continually wet areas please refer to our Polysafe Hydro range. As with all Polysafe products, Polysafe Standard should not have a polish applied.



For information regarding handling and installation, adhesives, maintenance, applications and chemical resistance, consult Polyflor.

At the date of issue the data presented is correct. However, Polyflor Ltd. reserves the right to make changes which do not adversely affect performance or quality.

* For certification regarding slip resistance, consult Polyflor.

**POLYFLOR
POLYSAFE
STANDARD**
SAFETY FLOORING

Heavy-duty safety flooring

 英伦经典装饰效果,
超耐用安全防滑地板

 Износостойкое антискользящее
напольное покрытие

Pavimento vinilico antideslizante



Decoration and shade may vary slightly from the samples shown.

The data presented is correct at the time of printing.

 For latest information, please check our web site at www.polyflor.com

 实际产品与样卡的色调和图案可能有轻微变化, 最新的信息请浏览我们的网站: www.polyflor.com

 Дизайн и оттенок материалов могут слегка отличаться от представленных образцов. Данная информация является верной на момент публикации. Пожалуйста, обратитесь к нашему сайту www.polyflor.com для получения последних новостей.

El diseño y la tonalidad pueden variar levemente de las muestras obtenidas.

Los datos presentados eran correctos en el momento de su impresión.

 Para acceder a información más actualizada acceder a nuestra página web, cuya dirección es www.polyflor.com

 POLYFLOR LTD. PO BOX 3 RADCLIFFE NEW ROAD WHITEFIELD MANCHESTER M45 7NR UK
TEL: +44 (0)161 767 1111 UK SALES DIRECT: +44 (0)161 767 1122 UK FAX: +44 (0)161 767 1128
EXPORT FAX: +44 (0)161 767 1166 E-MAIL: INFO@POLYFLOR.COM WWW.POLYFLOR.COM
UK SAMPLE REQUESTS: +44 (0)161 767 2551